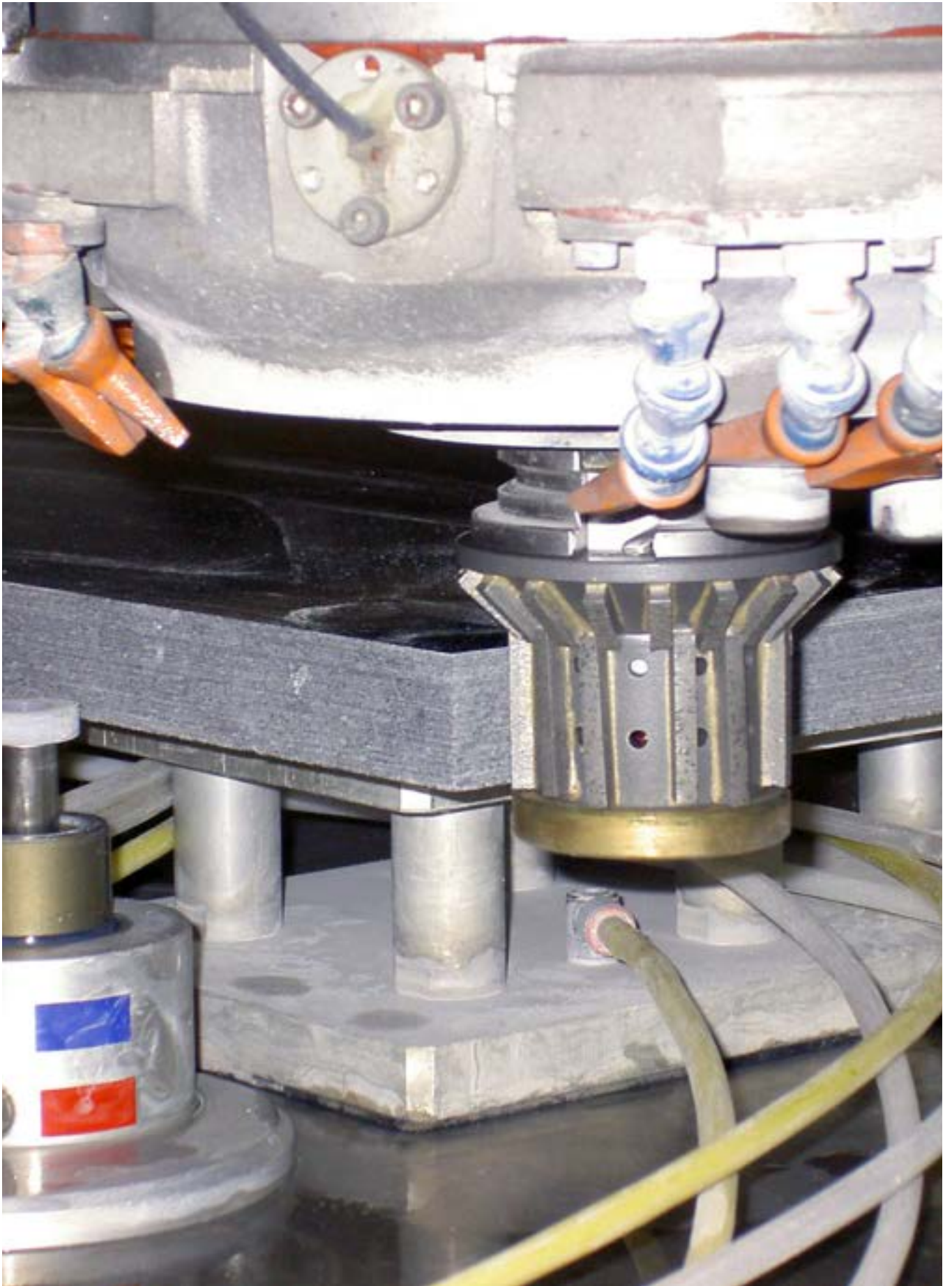


DESIGN
MANUFACTURE
SUPPLY
WORLDWIDE DIAMOND
TOOLING SOLUTIONS







DIAMOND

Diamond is pure carbon in a cubic crystal structure. It is the hardest of all known materials. Many applications benefit by the use of diamond in the Stone Industry for cutting, drilling, profiling, grinding and polishing etc. because it enables faster operation, extended life of the tool and allows accurate tolerances of shape and size. Used in the Stone Industry it is either 'natural' diamond extracted from the ground, crushed and shaped to suit a particular requirement, or it is 'synthetic' man-made diamond for specific applications. Diamond is made and graded according to its size, shape and friability.

CUSTOMERS' MATERIALS

Our Technical Department can test and advise on the best tooling required for special materials. Specialised tools can be made to suit most requirements and designs.

INFORMATION

The information in this catalogue is given as a guide only and we reserve the right to alter, amend and delete prices, specifications and product availability without prior notice.

We also manufacture and market a wide range of products for other industries including Stone, Glass and Ceramics, Composites including Reinforced Plastics, Engineering and Tobacco.

Please contact us for further information or assistance

TELEPHONE: +44 (0)1580 891662

FAX: +44 (0)1580 892724

E-MAIL: info@dk-holdings.co.uk

or visit our website:

www.dk-holdings.co.uk

Illustrations of products are not to scale.

We hope that you will find the enclosed information interesting and helpful in assisting you with your selection of our tools.

introduction

THE COMPANY

D.K. Holdings Limited has been manufacturing diamond tools and associated products since 1959. We have developed a unique expertise in producing and supplying diamond tooling specifically for the composites industry.

ISO 9001 QUALITY STANDARD

Our products are made to the highest quality standards. We are accredited with the approved quality management system BS EN ISO 9001 : 2015 for manufacture and supply of our products.

DIAMOND TOOLS

Flexible diamond tools of various shapes that will quickly and economically grind and polish a large range of materials in industry.

STOCK & SPECIAL TOOLS

A large range of the most popular products are held in stock at our Staplehurst factory for immediate despatch. Special tools can be designed and manufactured to meet your specific requirements on a relatively short lead time.

Our Technical Department can test and advise on the correct tooling required for special materials.

VISIT OUR FACTORY

We are happy to invite you to visit our UK factory located opposite Staplehurst Railway Station, which is on the main railway line just 60 minutes from London's Charing Cross Station.

ADDRESS:	Station Approach, Staplehurst, Kent TN12 0QN, UK
TELEPHONE:	+44 (0)1580 891662
FAX:	+44 (0)1580 892724
E-MAIL:	info@dk-holdings.co.uk
WEB:	www.dk-holdings.co.uk

INFORMATION

The information in this catalogue is given as a guide only and we reserve the right to alter, amend and delete prices, specifications and product availability without prior notice.

+44 (0)1580 891662

product index

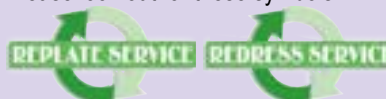
	Replate	Redress	Page
A - B			
ACCESSORIES			12
Arix Silent Centre Blades			1
C			
Chevron Dressing Bar			8
Chevron Grinding and Polishing Drums			8
Clear Cut Premium Silent Centre Blades			1
CNC Flute Grinding and Polishing System			11
CNC Tooling Adaptors			12
Continental (½" BSP) to 22.2mm Adaptor			12
CUTTING			1-2
D - E			
DK Arix Silent Centre Blades			1
DRILLING			3
Drum Dressing Bar			8
F - G			
Flute Polishing Wheels for Seelbach Machine			11
GRINDING			7
Grinding and Polishing Flute System			11
Grinding Drums			7, 8
H - I - J - K - L			
Horizontal Metal Bond Blade			2
Kwik-Cut CNC Granite Drills			3
M - N - O			
Metal Bond Mini Grinding Drums			7
Metal Bond Milling Wheels			7
Milling Wheels			7
Oma to 22.2mm Adaptor			12
P - Q			
Parallel Routers			6
Polishing Drums			8
POLISHING			8-11
Pro-Edge CNC Profile Polishing System			4
Profile Polishing Systems			4-5
PROFILING			4-6

	Replate	Redress	Page
R			
Recessing Grinding Wheels			7
Routers			6, 9-10
S - T			
SD Grinding and Polishing System			5
SD Milling Wheels			7
Seelbach Machine Flute Polishing Wheels			11
Silent Centre Blades			1
Solid Granite Drills Adaptor			12
Solid Granite Drills			3
Tooling Adaptors			12
TOOL HOLDERS			13-22
ISO 40	Bavelloni and Pedrini		14
	Brembana		15-16
	Breton		17
	Internac and Bimatech		18
ISO 40BT	Vem, Thibaut, Heliouis and Park Industries		19
HSK 80B	Breton		20
Tool Holder with coupling ½ gas			21
Collet Chuck 1/10-3/16-3/20-3/26			22
U - V			
Ultra Mini 45° Beveling Polishing Routers			10
Ultra Mini 5mm Radiusing Polishing Routers			10
Ultra Mini Polishing Routers			9
W - X - Y - Z			
WCG Blades			2
Zenesis CNC Parallel Routers			6

REPLATE & REDRESS SERVICE

At DK Holdings we are able to replate and or redress at very competitive prices many products of our own manufacture and also of other manufacturers which improves performance of the tools and saves you money!

Please look out for these symbols:



CLEAR CUT PREMIUM SILENT CENTRE BLADES

High quality, fast cutting laser welded segmented blades producing excellent results when wet cutting marble, granite and engineered stone.

Diameters 300mm - 600mm.

Bore 60mm bushed to 50mm.

MARBLE



For cutting MARBLE - 7mm height segments

CODE	DIAMETER (mm)
*BMS196	300
*BMS201	350
*BMS206	400
*BMS208	450
*BMS211	500
*BMS216	600

GRANITE



For cutting GRANITE - 10mm height segments

CODE	DIAMETER (mm)
BMS291	300
BMS296	350
BMS301	400
BMS304	450
BMS306	500
BMS311	600

ENGINEERED STONE



For cutting GRANITE - 15mm height segments

CODE	DIAMETER (mm)
*BMS430	300
*BMS435	350
*BMS455	400
*BMS465	450
*BMS475	500
*BMS480	600

For cutting ENGINEERED STONE - 12mm height segs.

CODE	DIAMETER (mm)	DESCRIPTION
BMS850	400	NGZ24 (40 x 3.2 x 12)
*BMS855	450	NGZ26 (40 x 3.6 x 12)
BMS860	500	NGZ30 (40 x 3.6 x 12)

When ordering please state Code.

*Denotes ex-stock.



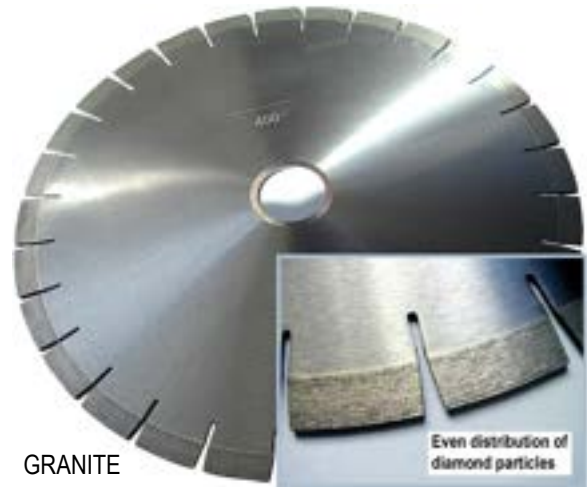
ARIX SILENT CENTRE BLADES

The DK Arix silent centre blade for wet cutting granite has specially formulated even distribution particles within the 15mm high segments that ensures an improved cutting speed, clean cut and longer life.

*Diameters 350mm - 600mm.
Bore 60mm bushed to 50mm.*

For wet cutting GRANITE

CODE	DIAMETER (mm)
*BMS1050	350
*BMS1055	400
*BMS1065	450
*BMS1070	500
*BMS1080	600



GRANITE

WCG BLADES

Specially developed for fast and clean cutting of artificial Crystallised Glass Stone. This "J" slot blade utilises specially graded diamond for smooth cutting with minimum chipping.

"J" slot body for improved stability, precision and excellent cooling.

*Diameters 300mm - 450mm.
Segment height 10mm.
Bore 60mm bushed to 50mm.*

For wet cutting artificial CRYSTALLISED GLASS STONE

CODE	DIAMETER (mm)
BMS760	300
BMS765	350
BMS770	400
BMS775	450



ARTIFICIAL CRYSTALLISED GLASS STONE

MB HORIZONTAL BLADE

Specially developed for horizontal cutting on granite and engineered stone slabs.

These metal bond blades are ideal for thinning down worktop edges and slot cutting. Thibaut fitting/other fittings available.

*Diameters 300mm - 450mm.
Blade thickness 4.5mm.
Segment height 10mm.*

For cutting GRANITE & ENGINEERED STONE

CODE	DIAMETER (mm)
BMS1330	300
BMS1335	350
BMS1340	400
BMS1345	450



GRANITE & ENGINEERED STONE SLABS



KWIK CUT DRILLS

KWIK CUT - CNC Granite Drills

Metal bond diamond wet cutting granite drills for use on CNC and semi automatic machines cutting at a rate of 1mm per second and will cut up to 45mm thickness material.

Diameters 14 - 35mm.
Continental 1/2" BSP fitting.

For GRANITE

CODE	DIAMETER (mm)
*BMD214	14
*BMD220	20
*BMD225	25
*BMD230	30
*BMD235	35

SOLID GRANITE DRILLS



SOLID GRANITE DRILLS

Metal bond with centre water feed for drilling holes in granite and other hard materials and to be used with a fixed drilling machine.

Adaptors are available to suit any water chuck fitting.

For drilling GRANITE

CODE	DIAMETER (mm)	SHANK (mm)
*BMD005	5	10
*BMD010	6	10
*BMD015	7	10
BMD016	7.3	10
*BMD020	8	10
BMD030	9	10
BMD032	9.5	10
*BMD035	10	10
BMD040	11	10
*BMD045	12	10
BMD050	13	10
BMD055	14	10
BMD060	15	10

OTHER RELATED PRODUCTS

SOLID GRANITE DRILL ADAPTORS - Page 11

When ordering please state Code.
*Denotes ex-stock.

PRO-EDGE CNC PROFILE POLISHING SYSTEM

Developed and field tested by our engineers, the Pro-Edge CNC Profile Polishing System grinds and polishes the edges of Granite and Marble achieving a professional high gloss finish. The seven stage system is available for the most popular shapes which includes ZS40, A30°5, V30 and F30. All profiles are available now and have central water feed with 35mm bore.

Ø76 x Ø35 mm A30/r5mm

CODE	POSITION	GRADE
*BMWC600	0	Metal Bond
*BBMC601	1	Vacuum Brazed
*BBMC602	2	Vacuum Brazed
*BMPC603	3	Resin 400
*BMPC604	4	Resin 1000
*BMPC605	5	Resin 2000
*BMPC606	6	Resin 10000

Ø82 x Ø35 mm ZS40

CODE	POSITION	GRADE
*BMWC500	0	Metal Bond
*BBMC501	1	Vacuum Brazed
*BBMC502	2	Vacuum Brazed
*BMPC503	3	Resin 400
*BMPC504	4	Resin 1000
BMPC505	5	Resin 2000
*BMPC506	6	Resin 10000

Ø120 x Ø35 mm F30

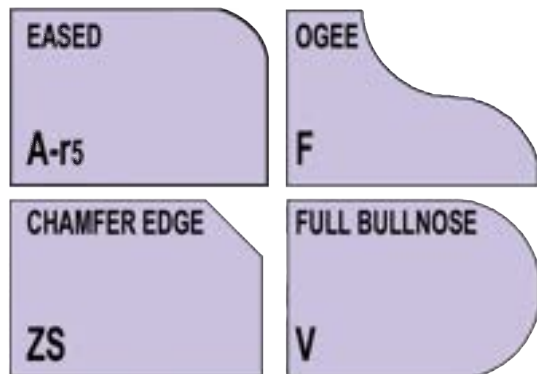
CODE	POSITION	GRADE
*BMWC300	0	Metal Bond
*BBMC301	1	Vacuum Brazed
*BBMC302	2	Vacuum Brazed
*BMPC303	3	Resin 400
*BMPC304	4	Resin 1000
*BMPC305	5	Resin 2000
*BMPC306	6	Resin 10000

Ø101 x Ø35 mm V30

CODE	POSITION	GRADE
*BMWC200	0	Metal Bond
*BBMC201	1	Vacuum Brazed
*BBMC202	2	Vacuum Brazed
*BMPC203	3	Resin 400
*BMPC204	4	Resin 1000
*BMPC205	5	Resin 2000
*BMPC206	6	Resin 10000



AVAILABLE PROFILES



These four most popular profiles for 30mm material are available for immediate delivery, with more shapes to follow.

We can also produce special profiles to customer's specifications.

Working Parameter on CNC Machines

Wheel Description	Use	Feeding Speed		Cutting Capacity (mm)	Spindle Rotation RPM
		Marble	Granite		
Pos#0 (Metal Bond)	Stock removal	400 - 800	500 - 600	0.3 - 0.4	4500 - 5000
Pos#1 (Brazed)	Shaping	1000 - 1500	1000 - 1500	0.2 - 0.4	3000 - 3500
Pos#2 (Brazed)	Honing	1500 - 2000	1200 - 1500	0.1 - 0.2	3000 - 3500
Pos#3 (Resin)	Finishing	1500 - 2000	1200 - 1500	0.05 - 0.1	2500 - 3000
Pos#4 (Resin)	Pre-polishing	800 - 1200		0.02 (Zero Pressure)	2500 - 3000
Pos#5 (Resin)	Polishing				2500 - 3000
Pos#6 (Resin)	Final buff				2500 - 3000

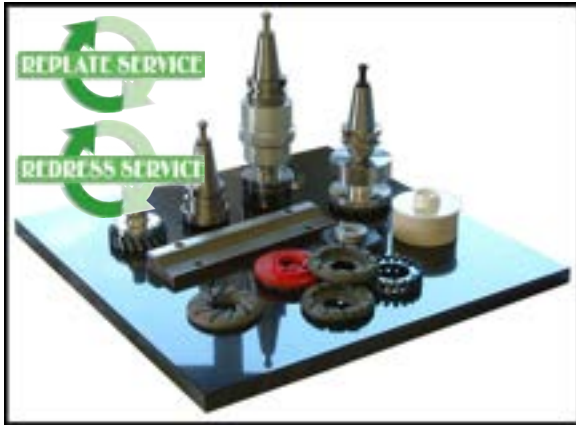
SD GRINDING & POLISHING SYSTEM -

For grinding and polishing recessed draining boards in granite

The SD system is now available after careful research and development to offer a simple and effective system that quickly produces an excellent quality finish. Designed to be used on semi automatic and CNC machines, the eight stage system produces superb results that most competitive systems are unable to achieve.

The Eight Stage SD System consists of:

A segmented Metal Bond wheel for rapid stock removal, coarse Electroplated wheels to grind side angle and calibrate draining board surface and five grades of Resin Bond wheels which produce a fantastic high quality polish to the angle and draining board surface.



†**COMPLETE SET 30° Magnetic & Snail-Lock SD Systems**
 MB diamond to Orange resin, EMPD3001 30° Dressing Bar and Carrying Case. Also includes recommended one of each adaptors for machine fitting 1/2" BSP:
 Magnetic MMP170, MMP160 and BMPD012
 Snail-Lock MMP170, MMP160, MMP195 and BMPD045.

†**COMPLETE SET 45° Magnetic & Snail-Lock SD Systems**
 MB diamond to Orange resin, EMPD4501 45° Dressing Bar and Carrying Case. Also includes recommended one of each adaptors for machine fitting 1/2" BSP:
 Magnetic MMP170, MMP160 and BMPD012
 Snail-Lock MMP170, MMP160, MMP195 and BMPD045.

SD SYSTEM		MAGNETIC 30°	MAGNETIC 45°
STAGE	GRADE	CODE	CODE
1	Metal Bond Coarse	*BMW170	*BMW170
2	Electroplated 30	*EMWD301	*EMWD451
3	Electroplated 120	*EMWD302	*EMWD452
4	Red Resin 200	*RFDD303	*RFDD453
5	Yellow Resin 400	*RFDD304	*RFDD454
6	White Resin 1000	*RFDD305	*RFDD455
7	Blue Resin 2000	*RFDD306	*RFDD456
8	Orange Resin 10000	*RFDD307	*RFDD457
†	Complete Set	*SMPD30	*SMPD45

SD SYSTEM		SNAIL-LOCK 30°	SNAIL-LOCK 45°
STAGE	GRADE	CODE	CODE
1	Metal Bond Coarse	*BMW170	*BMW170
2	Electroplated 30	*EMWD301S	*EMWD451S
3	Electroplated 120	*EMWD302S	*EMWD452S
4	Red Resin 200	*RFDD303S	*RFDD453S
5	Yellow Resin 400	*RFDD304S	*RFDD454S
6	White Resin 1000	*RFDD305S	*RFDD455S
7	Blue Resin 2000	*RFDD306S	*RFDD456S
8	Orange Resin 10000	*RFDD307S	*RFDD457S
†	Complete Set	*SMPD30S	*SMPD45S

NOTE:

SD System is available in sizes - Stage 1 MB 86mm or 100mm diameters.
 Electroplated and Resin grades 100mm diameter in 30° and 45° angles.
 Resin grades require 2-4 passes depending on hardness of stone.
 All grades must be used wet.

RECOMMENDED SEQUENCE AND WORKING PARAMETERS FOR SD SYSTEM

RECOMMENDED STAGE SEQUENCE		FEED RATE (mm/min)	SPINDLE SPEED (rpm)
1	MB COARSE	500	3500
2	ELECTROPLATED 30	500	3500
3	ELECTROPLATED 120	500 - 1000	3500
4	RED RESIN 200	1000 - 1200	1000 - 1500
5	YELLOW RESIN 400	1000 - 1500	1000 - 1500
6	WHITE RESIN 1000	2000 - 2500	1000 - 1500
7	BLUE RESIN 2000	2000 - 2500	1000 - 1500
8	ORANGE RESIN 10000	2000 - 2500	1000 - 1500



ZENESIS CNC PARALLEL ROUTERS For granite and Engineered Stone

Zenesis uses the most advanced technology of specially selected diamonds dispersed in triangular patterns within the segments. This means the Zenesis easily outperforms all other routers including the X-Wing. The benefits include increased cutting ability, good cutting speed, long life and competitive prices.

CNC PARALLEL ROUTERS

CODE	SPECIFICATION (mm)
*BMRZ2040	20 x 40 1/2" BSP Fitting
*BMRZ2540	25 x 40 1/2" BSP Fitting
*BMRZ2050	20 x 50 1/2" BSP Fitting
*BMRZ2550	25 x 50 1/2" BSP Fitting

RECOMMENDED SPEED: Ø25mm 4,500 - 5,500 rpm
 Ø20mm 5,500 - 6,500 rpm
 FEED RATE: 200 - 300 mm/min
 ROUTER PROTRUSION: 5mm



CNC PARALLEL ROUTERS

KWIK FLUTE -

Metal bond CNC routers for producing flutes in granite achieving a fine honed finish. 1/2" BSP fitting.

MB CNC ROUTERS

CODE	DIAMETER	GRADE
*NMBRC1205	Ø12.7mm	50
*NMBRC1212	Ø12.7mm	120
*NMBRC1220	Ø12.7mm	200
*NMBRC1240	Ø12.7mm	400
*NMBRC1200	Ø12.7mm	Complete Set
*NMBRC1605	Ø16mm	50
*NMBRC1612	Ø16mm	120
*NMBRC1620	Ø16mm	200
*NMBRC1640	Ø16mm	400
*NMBRC1600	Ø16mm	Complete Set
*NMBRC2005	Ø20mm	50
*NMBRC2012	Ø20mm	120
*NMBRC2020	Ø20mm	200
*NMBRC2040	Ø20mm	400
*NMBRC2000	Ø20mm	Complete Set



METAL BOND CNC ROUTERS

RECOMMENDED SPEED:

Stage 1: 10,000 rpm Stage 2,3 & 4: 10,000 rpm

FEED RATE:

Stage 1: 300/500 mm/min Stage 2,3 & 4: 500/700 mm/min

NOTE: Stage 1 - 2mm depth of cut
 Stage 2 - 0.3/0.5 depth of cut
 Stages 3 & 4 - 0.1/0.2 depth of cut



FOR RECESSING GRANITE DRAINERS

SD MILLING WHEELS -

For recessing granite drainers, premium fast grinding wheels for use on popular CNC/Semi Automatic machines.

For use on popular CNC/SEMI-AUTO MACHINES

CODE	SIZE (mm)
*BMW170	86 x 30 x 50 bore
*BMW175	Ø100mm
*MMP170	SD 1/2" BSP Continental Adaptor



FOR GRINDING DOWN AND CALIBRATING SLABS

MB MILLING WHEELS -

Diamond metal bond millings wheels for wet grinding and calibrating granite slabs to size.

METAL BOND WHEELS for GRANITE

CODE	SIZE (mm)
*BMW635	350 x 20 x 60/50 bore
*BMW640	400 x 20 x 60/50 bore

PREMIUM METAL BOND WHEELS for GRANITE

CODE	SIZE (mm)
BMW225	250 x 20 x 60/50 bore
*BMW230	300 x 20 x 60/50 bore
*BMW235	350 x 20 x 60/50 bore
*BMW240	400 x 20 x 60/50 bore
*BMW245	450 x 25 x 60/50 bore

METAL BOND DIAMOND CNC MINI GRINDING DRUMS -

Mini CNC 25mm diameter drums with central water feed are ideal for grinding tight corners and produce a good honed finish on granite edges. Supplied on 1/2" BSP fitting with M14 female fitting.

Can be used as an option in place of electroplated Mini Chevron Drums.

For GRINDING TIGHT CORNERS with 1/2" BSP

CODE	SIZE	GRADE
SMB705	25 x 40mm	MB1-50
SMB710	25 x 40mm	MB2-120
SMB715	25 x 40mm	MB3-200
SMB720	25 x 40mm	MB4-400

When ordering please state Code.

*Denotes ex-stock.



METAL BOND MINI DRUMS FOR GRINDING GRANITE



CHEVRON DRUMS - For CNC Machines

Designed specifically for CNC machines to quickly grind and polish inside and outside of GRANITE and HARD STONE vanity bowls achieving a high gloss finish. Manufactured with aluminium body, using a special formulated hard wearing resin bond impregnated with high quality diamonds. Recommended to be used wet. Available in sizes 50mm and 75mm diameters with widths 50mm or 38mm. Grades are identified by a clear grit colour code marking.

Various bore sizes are offered to fit the wide range of machines in the market. For example: 35mm and 22mm diameter for the Intermac and 20mm diameter for the Prussiani and Brembana.

DRUMS FOR CNC MACHINES

GRADE	CODE	
	Ø50mm x 38mm wide	Ø50mm x 50mm wide
Green 60	RFD920	RFD880
Black 120	RFD925	RFD885
Red 200	RFD930	RFD890
Yellow 400	RFD935	RFD895
White 1000	RFD940	RFD900
Blue 2000	RFD945	RFD905
Orange 10000	RFD950	RFD910

DRUMS FOR CNC MACHINES

GRADE	CODE	
	Ø75mm x 38mm wide	Ø75mm x 50mm wide
Green 60	RFD840	RFD800
Black 120	RFD845	RFD805
Red 200	RFD850	RFD810
Yellow 400	RFD855	RFD815
White 1000	RFD860	RFD820
Blue 2000	RFD865	RFD825
Orange 10000	RFD870	RFD830

DRUMS FOR CNC MACHINES M14 FITTING

GRADE	CODE	
	Ø75mm x 38mm wide	Ø75mm x 50mm wide
Green 60	*RFD840M14	RFD800M14
Black 120	*RFD845M14	RFD805M14
Red 200	*RFD850M14	RFD810M14
Yellow 400	*RFD855M14	RFD815M14
White 1000	*RFD860M14	RFD820M14
Blue 2000	*RFD865M14	RFD825M14
Orange 10000	*RFD870M14	RFD830M14

CHEVRON DRESSING BAR -

Diamond dressing bar specifically designed for dressing Chevron type diamond resin drums.

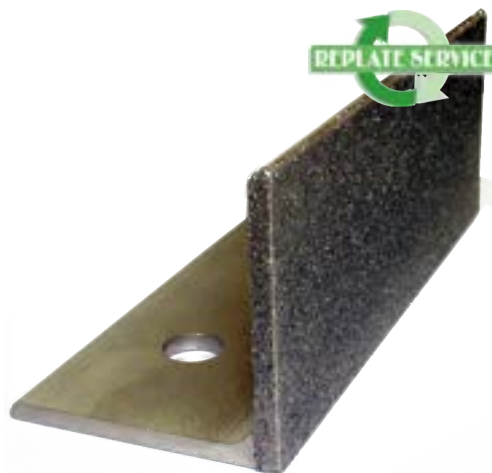
DRESSING BAR

CODE	DESCRIPTION
*EMP31108	Chevron Drum Dressing Bar to drg EMP31108



CNC CHEVRON DRUMS

RECOMMENDED SPEED:	2200 - 2700 rpm
FEED RATE:	1.5 mtr/min
PASSES:	2 per grade of Chevron
RADIAL ALLOWANCE for POLISHING Green to Blue	0.5 — 1mm
ADAPTIVE PRESSURE:	Advise 2 amps adaptive pressure for machines such as the Intermac.



FOR DRESSING CHEVRON DRUMS

ULTRA MINI CNC POLISHING ROUTERS - For granite and engineered stone kitchen worktops with tight corners

The Ultra Mini Polishing CNC Routers are 20mm diameter allowing grinding and polishing straight edges with very tight corners of 10mm radius. The four metal bond diamond and four resin diamond polishers grind and polish most types of granite and engineered stone. An excellent polished finish is achieved very quickly with long life of the tools.

The first four positions of metal bond includes ½” BSP fitting.
Positions 3, 4, 5 and 6 resins require an adaptor.



Feed	RPM	Stock Removal
600 mm/min	4700	1 mm
400 mm/min	4700	0.6mm
400 mm/min	4700	0.4mm
400 mm/min	4700	0.2mm
600 mm/min	3500	0 mm
600 mm/min	3000	0 mm
600 mm/mm	3000	0 mm
600 mm/min	3000	0 mm

Note: When using resin grades touch on centrifugal force gives the cut.

ULTRA MINI POLISHING ROUTERS ½” BSP/M14

CODE	SIZE (mm)	POSITION
*SMB205	20 x 40	MB1 Metal Bond
*SMB210	20 x 40	MB2 Metal Bond
*SMB215	20 x 40	MB3 Metal Bond
*SMB220	20 x 40	MB4 Metal Bond
*BMPPD015	20 x 40	R3 Resin Bond
*BMPPD020	20 x 40	R4 Resin Bond
*BMPPD025	20 x 40	R5 Resin Bond
*BMPPD030	20 x 40	R6 Resin Bond
*BMPA005	½” BSP	Adaptor
*SMB200	Complete Set with 4 Adaptors	

When ordering please state Code.
*Denotes ex-stock.

ULTRA MINI 45° BEVELLING CNC POLISHING ROUTERS -

The Ultra Mini 45° Bevel Polishing CNC Routers are 20mm in diameter allowing the grinding and polishing of bowl cutouts with very tight corners of 10mm radius creating a 45° bevelled top edge. The four metal bond diamond and four resin diamond polishers grind and polish most types of granite and engineered stone. An excellent polished finish is achieved very quickly with long life of the tools.

The first four positions of metal bond includes ½” BSP fitting. Positions 5, 6, 7 and 8 resins require an adaptor.

CODE	SIZE (mm)	POSITION
*SMB265	20 x 40	MB1 Metal Bond
*SMB270	20 x 40	MB2 Metal Bond
*SMB275	20 x 40	MB3 Metal Bond
*SMB280	20 x 40	MB4 Metal Bond
*BMPPD075	20 x 40	R5 Resin Bond
*BMPPD080	20 x 40	R6 Resin Bond
*BMPPD085	20 x 40	R7 Resin Bond
*BMPPD090	20 x 40	R8 Resin Bond
*BMPA005	½” BSP	Adaptor



ULTRA MINI 5mm RADIUSING CNC POLISHING ROUTERS -

The Ultra Mini 5mm Radiused Polishing CNC Routers are 20mm in diameter allowing the grinding and polishing of bowl cutouts with very tight corners of 10mm radius creating a 5mm radiused top edge. The four metal bond diamond and four resin bond diamond polishers grind and polish most types of granite and engineered stone. An excellent polished finish is achieved very quickly with long life of the tools.

The first four positions of metal bond includes ½” BSP fitting. Positions 5, 6, 7 and 8 resins require an adaptor.

CODE	SIZE (mm)	POSITION
*SMB235	20 x 40	MB1 Metal Bond
*SMB240	20 x 40	MB2 Metal Bond
*SMB245	20 x 40	MB3 Metal Bond
*SMB250	20 x 40	MB4 Metal Bond
*BMPPD045	20 x 40	R5 Resin Bond
*BMPPD050	20 x 40	R6 Resin Bond
*BMPPD055	20 x 40	R7 Resin Bond
*BMPPD060	20 x 40	R8 Resin Bond
*BMPA005	½” BSP	Adaptor



Feeds & Speeds for 45° Beveling & 5mm Radiusing Routers

Feed	RPM	Stock Removal
600 mm/min	4000	0.40mm
800 mm/min	4000	0.20mm
800 mm/min	4000	0.20mm
800 mm/min	4000	0.20mm
7/800 mm/min	3000	0.25mm
1000 mm/min	2500	0.06mm
1000 mm/min	2500	0.05mm
1000 mm/min	2500	0.05mm



TWO STAGE FLUTING WHEELS

Wheel Specification	RPM	Feed
Ø140mm Metal Bond	3900	800 mm/min
Ø140mm Resin	3000	600 mm/min
Ø200mm Metal Bond	2770	800 mm/min
Ø200mm Resin	2100	600 mm/min

CNC FLUTE GRINDING & POLISHING SYSTEM -

A two stage Granite and Engineered Stone flute grinding system for most types of CNC and semi automatic machines.

Designed to produce excellent polished flutes very quickly using only one metal bond and one resin polisher.

Two Stage Fluting Wheels for CNC and Semi Automatic Machines

CODE	SIZE	TYPE
*BMWF010	140 x 12.7 x 30	Metal Bond for Intermac
*BMPF014	140 x 12.7 x 30	Resin 400 Grit for Intermac
*BMWF005	140 x 10 x 30	Metal Bond for Intermac
BMPF009	140 x 10 x 30	Resin 400 Grit for Intermac
BMWF030	200 x 10 x 50	Metal Bond Full Radius
BMPF034	200 x 10 x 50	Resin 400 Grit Full Radius

NOTE: Other sizes and grades available on request.



FLUTE POLISHING WHEELS FOR SEELBACH MACHINE

FLUTE POLISHING WHEELS FOR SEELBACH MACHINE -

After the flute grooves have been ground follow with these 200mm diameter diamond flute polishing wheels to produce an excellent polished finish in granite, engineered stone and marble.

Fluting Wheels for Seelbach Machines

CODE	SIZE (mm)	GRADE
SMP310	200 x 12.7 x 22.2	Red 200
SMP320	200 x 12.7 x 22.2	White 1000
*SMP325	200 x 12.7 x 22.2	Blue 2000
BMP325	200 x 12.7 x 22.2	Felt

When ordering please state Code.

*Denotes ex-stock.

TOOLING ADAPTORS

For CNC and semi automatic machines.

OMA TO 22.2mm ADAPTOR

Oma machine adaptor for profile routing and polishing system.

For Profile Routers

CODE	DESCRIPTION
*MMP200	Oma to 22.2mm



OMA TO 22.2mm

CONTINENTAL (1/2" BSP) TO 22.2mm ADAPTOR

Continental (1/2" BSP) to 22.2mm adaptor to fit CNC and semi automatic machines.

For Profile Routers

CODE	DESCRIPTION
*MMP180	Continental to 22.2mm



CONTINENTAL (1/2" BSP) TO 22.2mm

SOLID GRANITE DRILL ADAPTORS

Adaptors for CNC machines to fit solid granite drills.

For use with Water Chucks

CODE	DESCRIPTION
*MMP054C	Continental 1/2" BSP : to accept 10mm dia. Shanks



SOLID GRANITE DRILL ADAPTORS

tool holders



DK Holdings supply tool holders for stone and glass working machinery.

Tool holders are available in two different materials, Niploy treated or stainless steel. Standard material is Niploy and prices are available on request for stainless steel.

Our standard range of tools are available for most machine types in use.

We are also able to produce non-standard tool holders to customer requirements.

All of our tool holders come complete with the appropriate retention knob and locking kit.

PROTECTIVE TREATMENTS

NIPLOY

Coolants used in processing glass and stone are a mixture of water and chemicals. While coolants are effective in aiding the processing of the products, these chemical agents are highly corrosive to metal. To avoid oxidation and corrosion problems, every exposed surface of our tool holders are coated with "Niploy", a special process based on the chemical deposition of nickel. This nickel coating process leaves micro particles on the surface of the tapered cones that are not measurable with standard tools.

STAINLESS STEEL

We are able to offer stainless steel, prices are available on request.

DELIVERY

Standard Tool holders 7-10 Working Days.

Non Standard and Stainless Steel Tool holders, delivery on request.

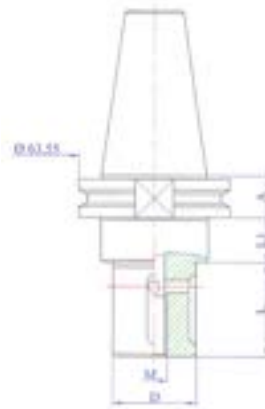
tool holders ISO 40

Type BAVELLONI & PEDRINI

GRINDING WHEEL HOLDER

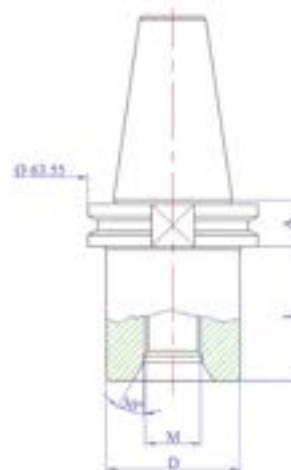
CODE	A	D	L	L1
MVBA111	19.1	22	20	10
MVBA122	19.1	22	34	10
MVBA112	19.1	22	39	10
MVBA123	19.1	22	47	10
MVBA113	19.1	22	80	10
MVBA114	19.1	35	20	10
MVBA124	19.1	35	34	10
MVBA115	19.1	35	39	10
MVBA125	19.1	35	47	10
MVBA116	19.1	35	80	10
MVBA117	19.1	45	45	15.9
MVBA121 C	19.1	50	5	30.9
MVBA126 L	19.1	50	5	75

NOTE: MVBA121C & MVBA126L has 6 holes.



DRILL POINT HOLDER

CODE	A	M	D	L1
MVBA101	19.1	1/2"	50	50
MVBA106L	19.1	M30	50	50

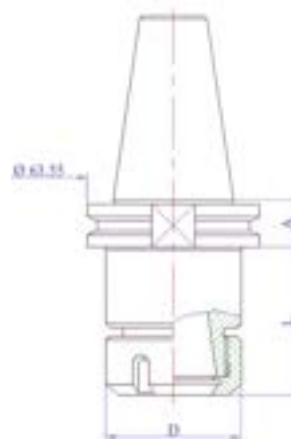


ER COLLET CHUCK HOLDER

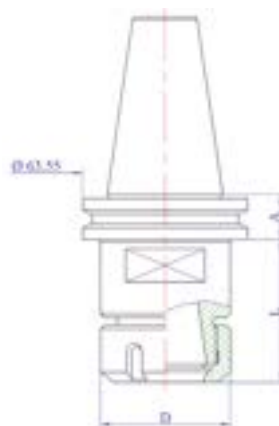
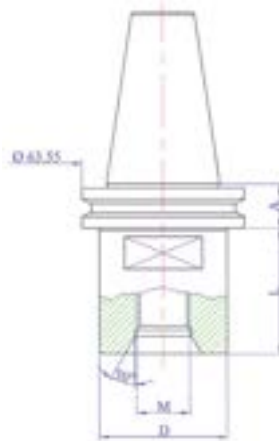
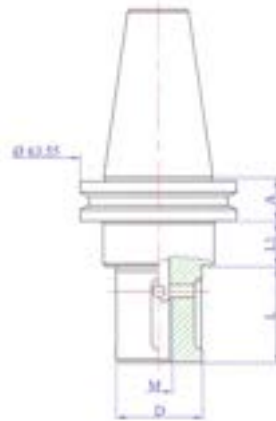
CODE	A	COLLET TYPE	D	L
MVBA131	19.1	ER32	50	72.5
MVBA132	19.1	ER40	63	72.5

NOTE: For ER Collets see page 22.

When ordering please state Code.



tool holders ISO 40



Type BREMBANA (new type)

GRINDING WHEEL HOLDER

CODE	A	D	L	L1
MVBR111NT	19.1	22	20	50
MVBR122NT	19.1	22	34	50
MVBR112NT	19.1	22	39	50
MVBR123NT	19.1	22	47	50
MVBR113NT	19.1	22	80	50
MVBR114NT	19.1	35	20	50
MVBR124NT	19.1	35	34	50
MVBR115NT	19.1	35	39	50
MVBR125NT	19.1	35	47	50
MVBR116NT	19.1	35	80	50
MVBR117NT	19.1	45	45	50
MVBR121NTC	19.1	50	5	30.9
MVBR126NTL	19.1	50	5	75

NOTE: MVBR121NTC & MVBR126NTL has 6 holes.

DRILL POINT HOLDER

CODE	A	SIZE	D	L
MVBR101NT	19.1	1/2"	50	50
MVBR106NT	19.1	M30	50	50

ER COLLET CHUCK HOLDER

CODE	A	COLLET TYPE	D	L
MVBA131NT	19.1	ER32	50	53.4
MVBA132NT	19.1	ER40	63	57.15

NOTE: For ER Collets see page 22.

When ordering please state Code.

tool holders ISO 40

Type BREMBANA (old type)

GRINDING WHEEL HOLDER

CODE	A	D	L	L1
MVBR111OT	36.6	22	20	50
MVBR122OT	36.6	22	34	50
MVBR112OT	36.6	22	39	50
MVBR123OT	36.6	22	47	50
MVBR113OT	36.6	22	80	50
MVBR114OT	36.6	35	20	50
MVBR124OT	36.6	35	34	50
MVBR115OT	36.6	35	39	50
MVBR125OT	36.6	35	47	50
MVBR116OT	36.6	35	80	50
MVBR117OT	36.6	45	45	50
MVBR121OTC	36.6	50	5	30.9
MVBR126OTL	36.6	50	5	75

NOTE: MVBR121COT & MVBR126LOT has 6 holes.

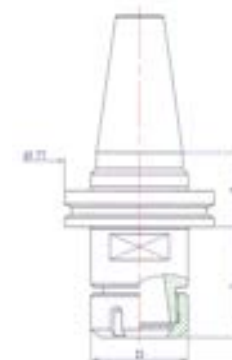
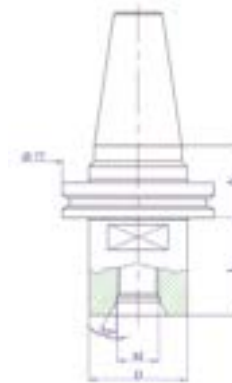
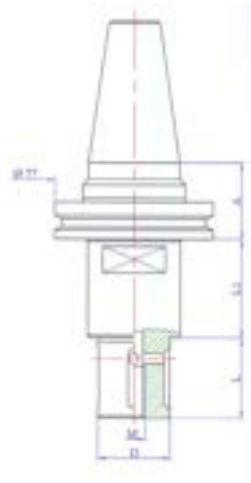
DRILL POINT HOLDER

CODE	A	SIZE	D	L
MVBR101OT	36.6	1/2"	45	45
MVBR106OT	36.6	M30	45	45

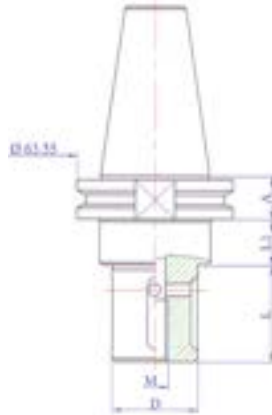
ER COLLET CHUCK HOLDER

CODE	A	COLLET TYPE	D	L
MVBR131OT	36.6	ER32	50	42.5
MVBR132OT	36.6	ER40	63	46.5

NOTE: For ER Collets see page 22.



tool holders ISO 40

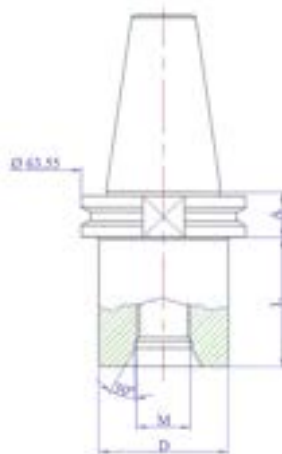


Type BRETON

GRINDING WHEEL HOLDER

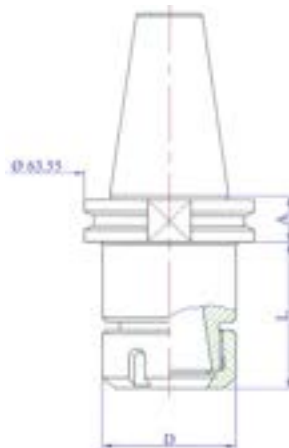
CODE	A	D	L	L1
MVBT111	19.1	22	20	15.9
MVBT122	19.1	22	34	15.9
MVBT112	19.1	22	39	15.9
MVBT123	19.1	22	47	15.9
MVBT113	19.1	22	80	15.9
MVBT114	19.1	35	20	15.9
MVBT124	19.1	35	34	15.9
MVBT115	19.1	35	39	15.9
MVBT125	19.1	35	47	15.9
MVBT116	19.1	35	80	15.9
MVBT117	19.1	45	45	15.9
MVBT121C	19.1	50	5	30.9
MVBT126L	19.1	50	5	75

NOTE: MVBT121C & MVBT126L has 6 holes.



DRILL POINT HOLDER

CODE	A	SIZE	D	L
MVBT101	19.1	1/2"	50	50
MVBT106	19.1	M30	50	50



ER COLLET CHUCK HOLDER

CODE	A	COLLET TYPE	D	L
MVBT131	19.1	ER32	50	53.4
MVBT132	19.1	ER40	63	57.4

NOTE: For ER Collets see page 22.

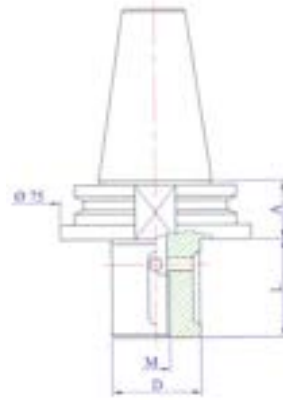
When ordering please state Code.

tool holders ISO 40

Type INTERMAC & BIMATECH

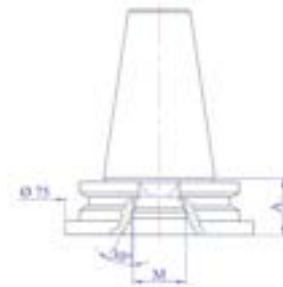
GRINDING WHEEL HOLDER

CODE	A	D	L
MVIN111	25	22	20
MVIN122	25	22	34
MVIN112	25	22	39
MVIN123	25	22	47
MVIN113	25	22	80
MVIN113B	25	22	90
MVIN114	25	35	20
MVIN124	25	35	34
MVIN115	25	35	39
MVIN125	25	35	47
MVIN116	25	35	80
MVIN117	25	45	45
MVIN121C	25	50	5
MVIN126L	25	50	5



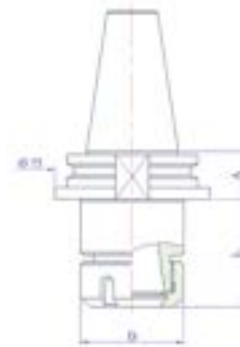
DRILL POINT HOLDER

CODE	A	SIZE
MVIN101	25	1/2"
MVIN106	25	M30



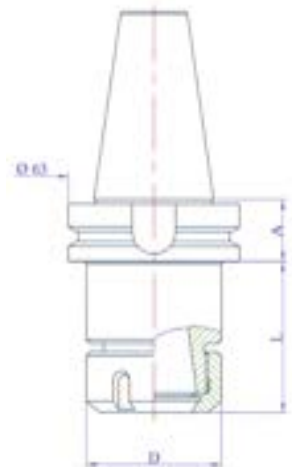
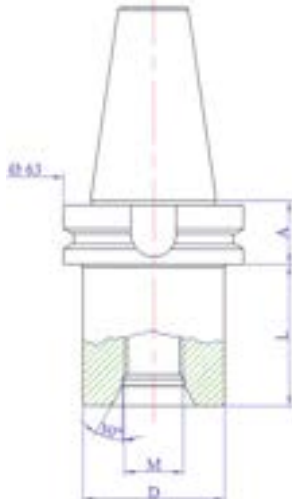
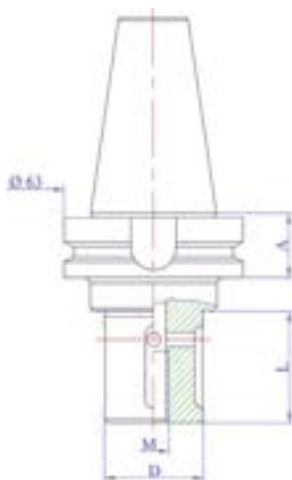
ER COLLET CHUCK HOLDER

CODE	A	COLLET TYPE	D	L
MVIN131	25	ER32	50	52.5
MVIN132	25	ER40	63	56.5



NOTE: For ER Collets see page 22.

tool holders ISO 40 BT



Type VEM, THIBAUT, HELLIOUS & PARK INDUSTRIES

GRINDING WHEEL HOLDER

CODE	A	D	L
MVVE111	27	22	20
MVVE122	27	22	34
MVVE112	27	22	39
MVVE123	27	22	47
MVVE113	27	22	80
MVVE114	27	35	20
MVVE115	27	35	34
MVVE124	27	35	39
MVVE125	27	35	47
MVVE116	27	35	80
MVVE117	27	45	45
MVVE121C	27	50	5
MVVE126L	27	50	5

NOTE: MVVE121C & MVVE126L has 6 holes.

DRILL POINT HOLDER

CODE	A	SIZE	D	L
MVVE101	27	1/2"	45	23
MVVE103	27	1/2"	50	50
MVVE106	27	M30	45	23

ER COLLET CHUCK HOLDER

CODE	A	COLLET TYPE	D	L
MVVE131	27	ER32	50	72.50
MVVE132	27	ER40	63	76.25

NOTE: For ER Collets see page 22.

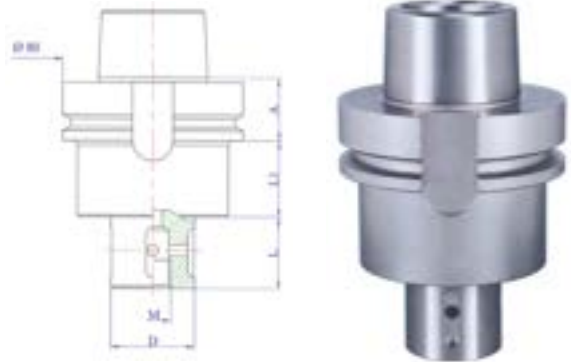
When ordering please state Code.

tool holders HSK 80B

Type BRETON

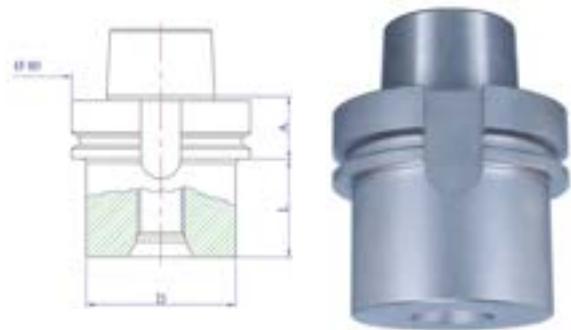
GRINDING WHEEL HOLDER

CODE	A	D	L	L1
MVBE111	26	22	20	44
MVBE112	26	22	34	44
MVBE122	26	22	47	44
MVBE113	26	22	90	44
MVBE114	26	35	20	44
MVBE115	26	35	32	44
MVBE125	26	35	47	44
MVBE116	26	35	90	44
MVBE117	26	45	44	44
MVBE118	26	50	5	44



DRILL POINT HOLDER

CODE	A	SIZE	D	L
MVBE101	26	1/2"	67	44
MVBE106	26	M30	67	44



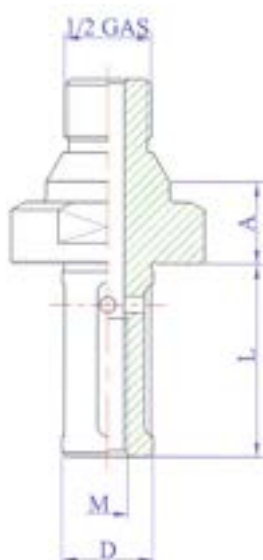
ER COLLET CHUCK HOLDER

CODE	A	COLLET TYPE	D	L
MVBE131	26	ER32	50	94
MVBE132	26	ER40	63	94

NOTE: For ER Collets see page 22.

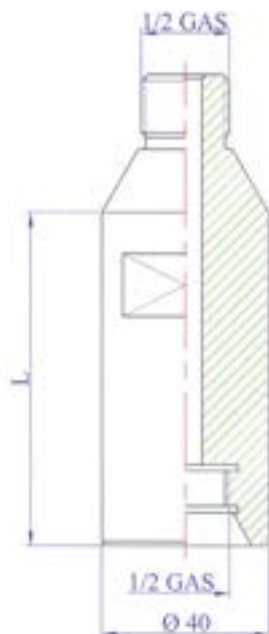


tool holders with coupling 1/2 gas



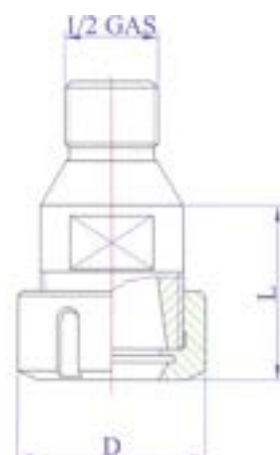
GRINDING WHEEL HOLDER

CODE	A	D	L
MV12G212	20	22	39
MV12G213	20	22	80
MV12G215	20	35	39
MV12G216	20	35	80
MV12G217	20	45	45



DRILL POINT HOLDER

CODE	SIZE	D	L
MV101	1/2"	40	80
MV102	1/2"	40	120
MV106	M30	40	80
MV109	M30	40	120



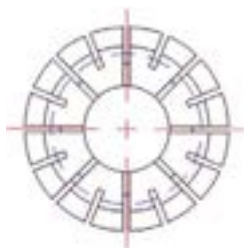
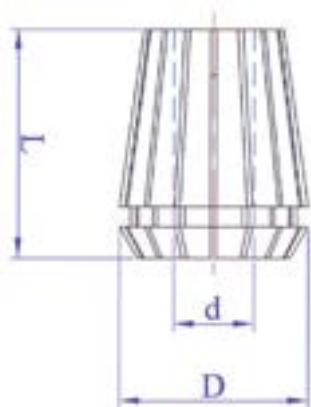
ER COLLET CHUCK HOLDER

CODE	A	COLLET TYPE	D	L
MV12G100	25	ER16	22	40
MV12G160	25	ER25	42	40

NOTE: For ER Collets see page 22.

When ordering please state Code.

collet chuck 2/10-3/16-3/20-3/26



COLLET CHUCKS

ER 16		ER 25			ER 32			ER 40				
COLLECT CODE		COLLECT CODE			COLLECT CODE			COLLECT CODE				
Capacity 2-10mm	D	L	Capacity 3-16mm	D	L	Capacity 3-20mm	D	L	Capacity 3-26mm	D	L	d
99848LN	17	27.5	99901AN	26	35	99916SN	33	40				2-3
99850MN	17	27.5	99902BN	26	35	99917TN	33	40	99936VN	41	46	3-4
99832AN	17	27.5	99903CN	26	35	99918VN	33	40	99937ZN	41	46	4-5
99834BN	17	27.5	99904DN	26	35	99919ZN	33	40	99938AN	41	46	5-6
99836CN	17	27.5	99905EN	26	35	99920AN	33	40	99939JN	41	46	6-7
99838DN	17	27.5	99906FN	26	35	99921BN	33	40	99940BN	41	46	7-8
99840EN	17	27.5	99907GN	26	35	99922CN	33	40	99941CN	41	46	8-9
99842FN	17	27.5	99908HN	26	35	99923DN	33	40	99942DN	41	46	9-10
99844GH	17	27.5	99909LN	26	35	99924EN	33	40	99943EN	41	46	10-11
99846HN	17	27.5	99910MN	26	35	99925FN	33	40	00044FN	41	46	11-12
			99911NN	26	35	99926HN	33	40	99945GN	41	46	12-13
			99912PN	26	35	99927LN	33	40	99946HN	41	46	13-14
			99913QN	26	35	99928LN	33	40	99947LN	41	46	14-15
			99914RN	26	35	99929MN	33	40	99948MN	41	46	15-16
						99930NN	33	40	99949NN	41	46	16-17
						99931PN	33	40	99950PN	41	46	17-18
						99932QN	33	40	99951QN	41	46	18-19
						99933RN	33	40	99952RN	41	46	19-20
									99953SN	41	46	20-21
									99954TN	41	46	21-22
									99955VN	41	46	22-23
									99956ZN	41	46	24-25
									99957WN	41	46	25-26
									99959AN	41	46	26-27

business terms

BUSINESS HOURS

Monday — Friday : 8.00 am - 5.00 pm

ORDERING IS EASY

Contact us on:



TELEPHONE - +44 (0)1580 891662



FAX - +44 (0)1580 892724



E-MAIL - sales@dk-holdings.co.uk



Or alternatively post your order to:
DK Holdings Limited
Station Approach, Staplehurst
Kent TN12 0QN
UK

MINIMUM ORDER VALUE

There is no minimum order value.

DELIVERY

Phone, Fax or E- mail your order through to our sales department before 12.00pm for same day despatch on stocked items when you hold an approved credit account. For non account holders we will despatch on receipt of payment. Cheques and credit card/debit payments accepted.

DEDICATED SALES TEAM

Our fully trained sales staff are ready to take your calls from 8.00am to 5pm Monday to Friday (answering system outside these call times). They can offer advice and guidance to ensure that you get the right product for your application.

PAYMENT TERMS

Paying is easy. Open an account, pay by credit/debit card, cheque or credit transfer.

To qualify for credit account status, a credit application must be completed in full. Satisfactory references are required for credit consideration.

CARD PAYMENTS

We accept payment by Visa, MasterCard, Maestro and Visa Debit.



BANK DETAILS

D.K. Holdings Bank Details
International Bank Account Number (IBAN)

Bank: National Westminster Bank PLC
Address: 3 High Street, Maidstone,
Kent, ME14 1XU,
United Kingdom.

Country: GB
Currency: STERLING
Sort Code: 60-60-08
Account No: 02901749
IBAN No: GB10NWBK60600802901749
B.I.C. No: NWBKGB2L



@DK_Holdings



DK Holdings Limited

+44 (0)1580 891662



credit application

Account No:

Applicant:

Company Name & Address

Bankers:

Name & Address

Sort Code:

Account No:

Trade Reference 1:

Name & Address

Email:

Telephone No:

Trade Reference 2:

Name & Address

Email:

Telephone No:

On completion please return this credit application by fax/mail to DK Holdings Limited

D.K. Holdings Limited collects personal information when you complete this form or place an order with us for our products. We will use this information to provide the products and services requested, maintain guarantee records and, if you have agreed, to send you occasional marketing information. For further information on how our data might be used, please see our Privacy Notice. We would like to send you information about our products. Please tick one of the following.

Yes, I do agree
No, I do not agree

+44 (0)1580 892724

DIAMOND TOOLS ALSO AVAILABLE FOR:

DK HOLDINGS LIMITED

DIAMOND TOOLS FOR COMPOSITES
PRODUCT GUIDE

DESIGN
MANUFACTURE
SUPPLY
WORLDWIDE DIAMOND
TOOLING SOLUTIONS



t: +44 (0)1580 891662
www.dk-holdings.co.uk

DK HOLDINGS LIMITED

DIAMOND TOOLS FOR ENGINEERING
PRODUCT GUIDE

DESIGN
MANUFACTURE
SUPPLY
WORLDWIDE DIAMOND
TOOLING SOLUTIONS



t: +44 (0)1580 891662
www.dk-holdings.co.uk

DK HOLDINGS LIMITED

FLEXIBLE
PRODUCT GUIDE

DESIGN
MANUFACTURE
SUPPLY
WORLDWIDE DIAMOND
TOOLING SOLUTIONS



t: +44 (0)1580 891662
www.dk-holdings.co.uk

DK HOLDINGS LIMITED

DIAMOND TOOLS FOR FLOOR
PRODUCT GUIDE

DESIGN
MANUFACTURE
SUPPLY
WORLDWIDE DIAMOND
TOOLING SOLUTIONS



t: +44 (0)1580 891662
www.dk-holdings.co.uk

DK HOLDINGS LIMITED

DIAMOND TOOLS FOR GLASS
PRODUCT GUIDE

DESIGN
MANUFACTURE
SUPPLY
WORLDWIDE DIAMOND
TOOLING SOLUTIONS



t: +44 (0)1580 891662
www.dk-holdings.co.uk

DK HOLDINGS LIMITED

DIAMOND TOOLS FOR STONE
PRODUCT GUIDE

DESIGN
MANUFACTURE
SUPPLY
WORLDWIDE DIAMOND
TOOLING SOLUTIONS



t: +44 (0)1580 891662
www.dk-holdings.co.uk